

美罗

- 一次烧成 • Single firing • Monocottura • Monocuisson • Einmalbrand • Monococción



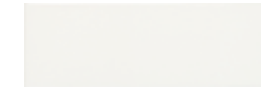
 Lux
10x30



符合 • According to • Conforme •
Conforme • Gemäß • Conforme
UNI EN 14411 - J B1a

规格 • Sizes • Formati • Formats •
Formate • Formatos

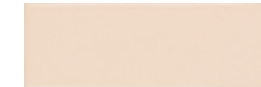
 10x30



MMMV 白色 •
Mellow Sugar 10x30



MMMW 棉花白 •
Mellow Cotton 10x30



MMMX 桃粉 •
Mellow Peach 10x30



MMMY 姜黄 •
Mellow Ginger 10x30



MMN2 青绿色 •
Mellow Teal 10x30



MMMZ 烟灰 •
Mellow Fumè 10x30



MMN1 蓝灰色 •
Mellow Indaco 10x30

Rif. 白色/青绿色/烟灰/
蓝灰色 • Sugar / Teal / Fumè /
Indaco





MMN3 花砖 •
Decoro 10x30

Rif. 白色/棉花白/桃粉/姜黄 •
Sugar / Cotton / Peach /
Ginger



MMN4 花砖 •
Decoro 10x30

包装 Packing Imballi Verpackungen Emballages Embalajes	 片/箱 Pieces Pezzi Stck Pièces Piezas	平米/箱 Sq. Mt Mq Qm Mq Mq	公斤/箱 Kg Kr	 箱/托 Box Scatole Karton Boite Caja	平米/托 Sq. Mt Mq Qm Mq Mq	公斤/托 Kg Kr	厚度 Thickness Spessore Stärke Epaisseur Espesor
10x30	28	0,84	14,76	66	55,44	974,20	9,0
10x30 Decoro	27	0,81	14,13	66	53,46	932,72	9,5